



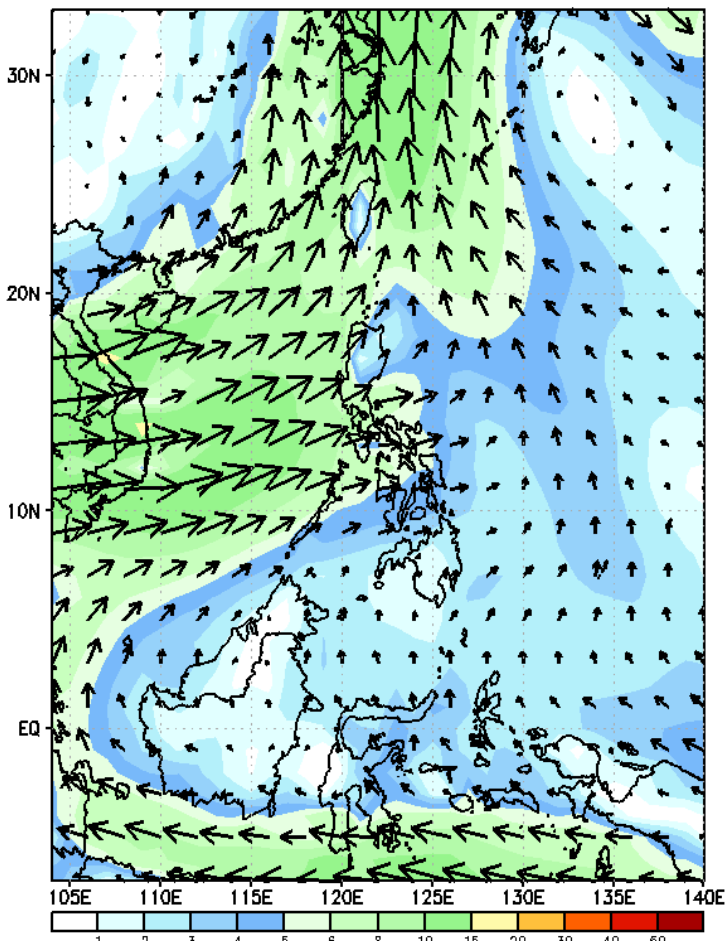
# Week 1 & Week 2 Forecast for the Philippines using GEFS Model



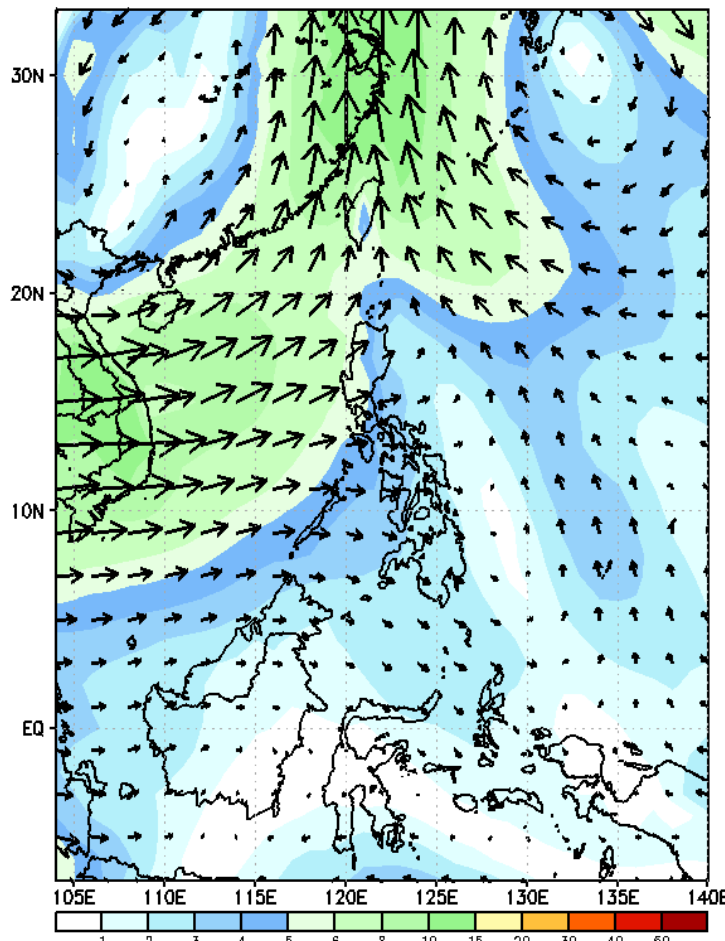
# GEFS Week-1 Wind Forecasts:

Week 1: Jul 26-Aug 01, 2024

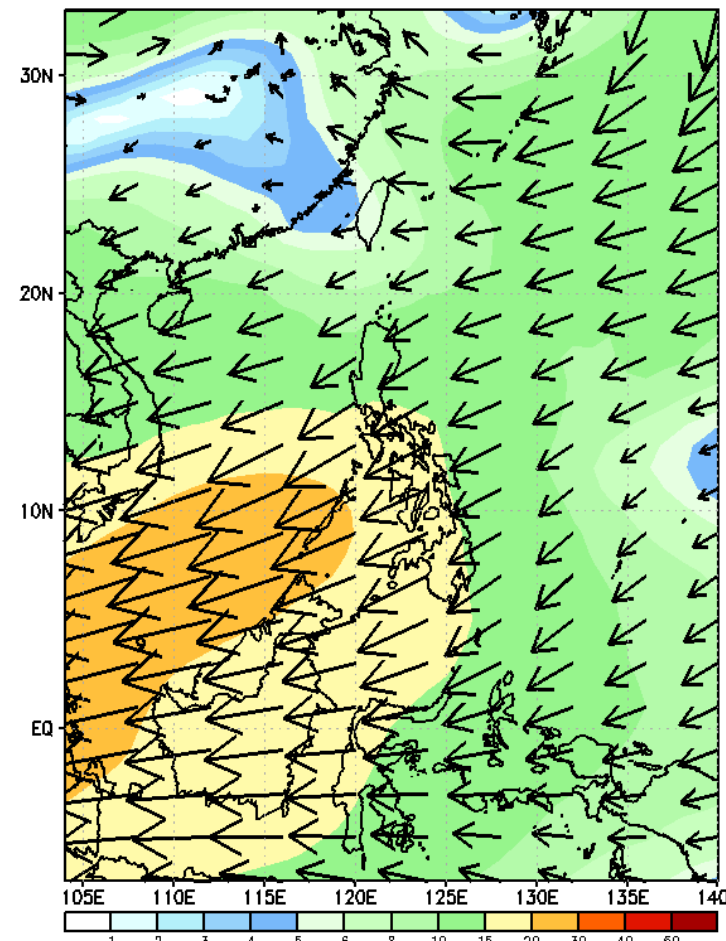
GEFS Week-1 850-hPa Wind Total  
Valid: 20240726 - 20240801



GEFS Week-1 700-hPa Wind Total  
Valid: 20240726 - 20240801

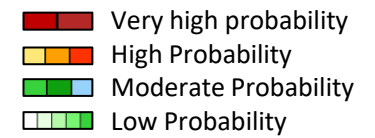


GEFS Week-1 200-hPa Wind Total  
Valid: 20240726 - 20240801



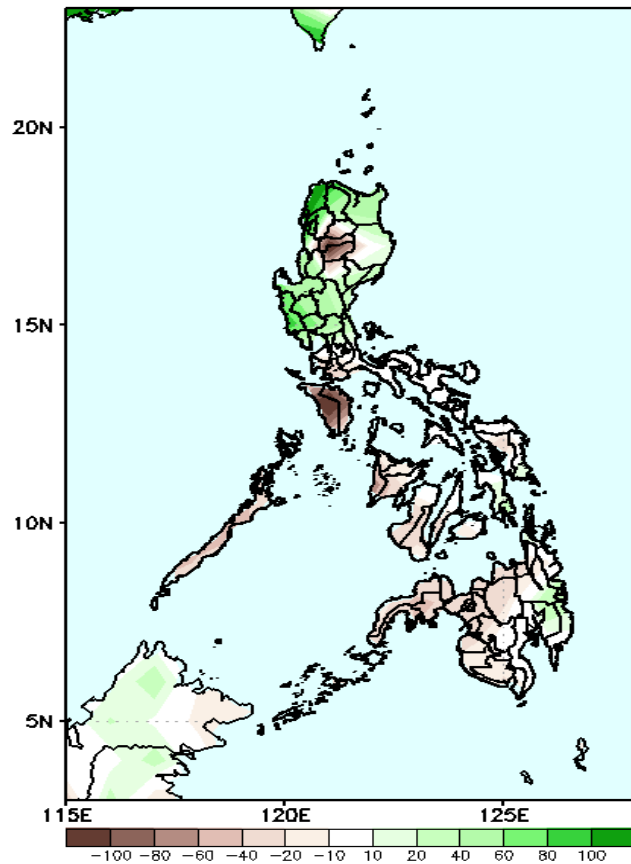
Southwest Monsoon affecting Western of Luzon and Visayas. Easterlies affecting the rest of the country during the forecast period

# Precipitation Anomaly and Exceedance Probability > 25/50 mm



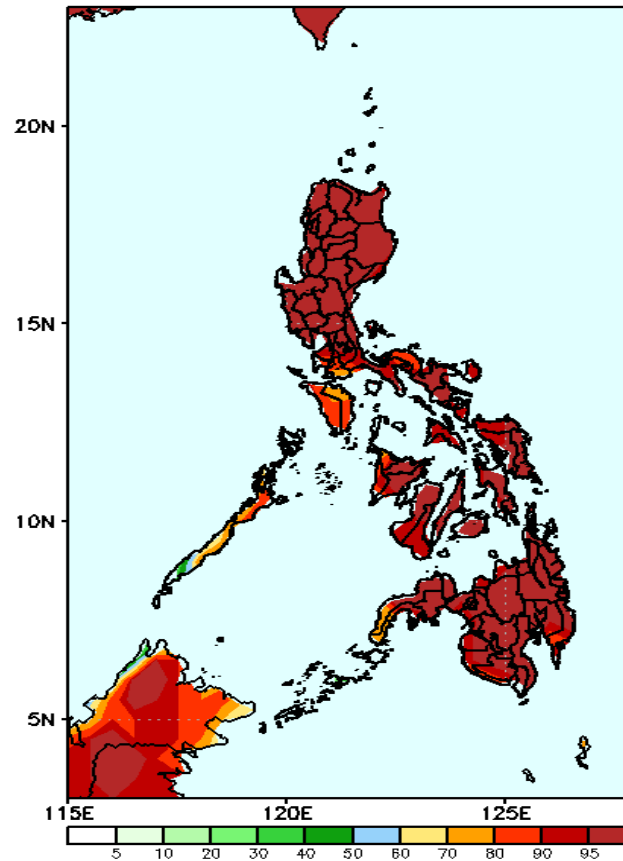
Week 1: Jul 26-Aug 01, 2024

GEFS Week-1 Precip Anomaly  
Valid: 20240726 - 20240801



60-100mm increase of rainfall in most parts of Ilocos Region, Apayao, Cagayan and Central Luzon while 60-100mm deficit of rainfall over the rest of the country.

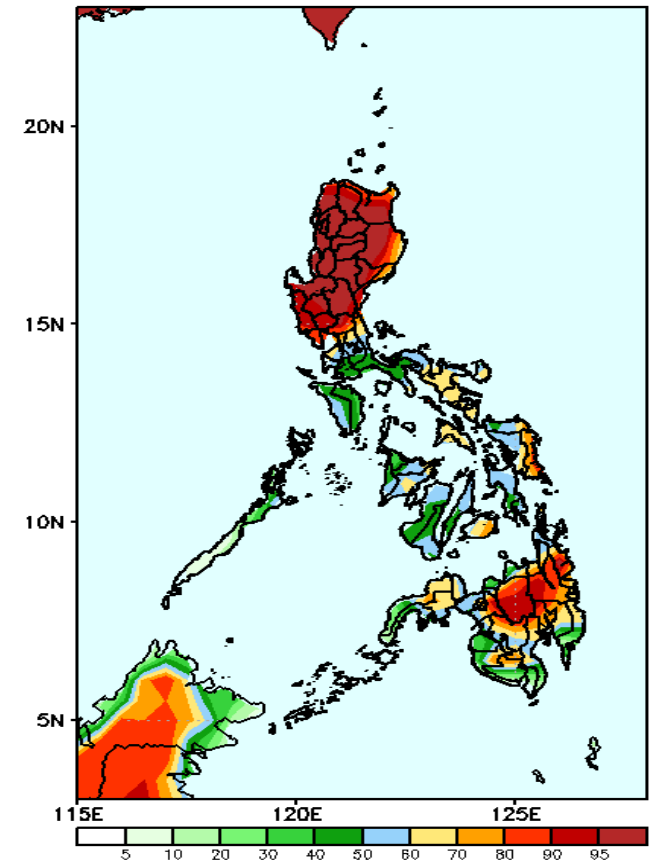
GEFS Week-1 Exceedance Prob. > 25mm  
Valid: 20240726 - 20240801



### Probability to Exceed 25mm

- High to very high over most parts of the country;
- Moderate to high over Palawan, Basilan, Sulu and Tawi-tawi.

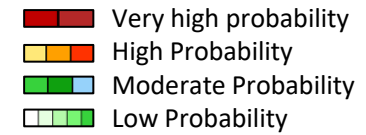
GEFS Week-1 Exceedance Prob. > 50mm  
Valid: 20240726 - 20240801



### Probability to Exceed 50mm

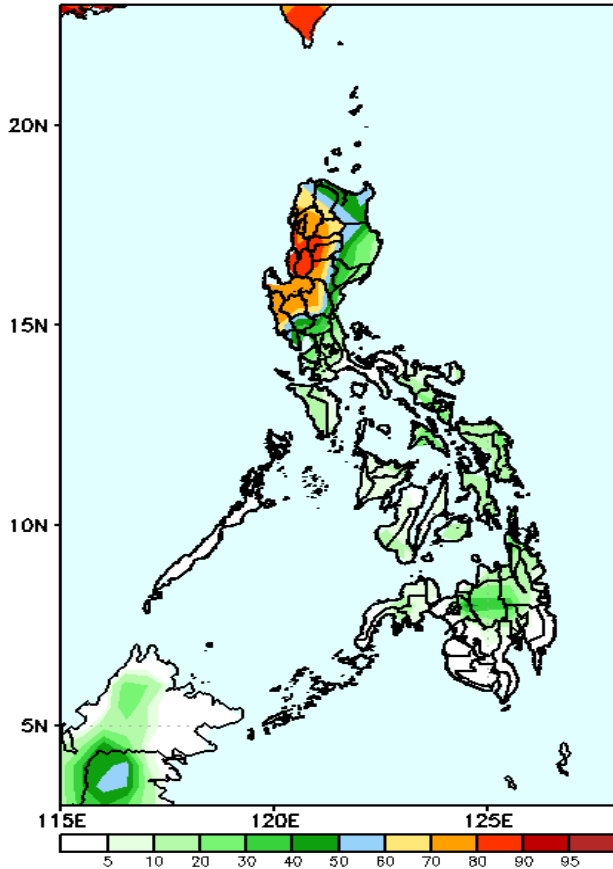
- High to very high over Northern and Central Luzon;
- Moderate to high over the rest of the country;
- Low over Palawan.

# Exceedance Probability > 100/150/200 mm



## Week 1: Jul 26-Aug 01, 2024

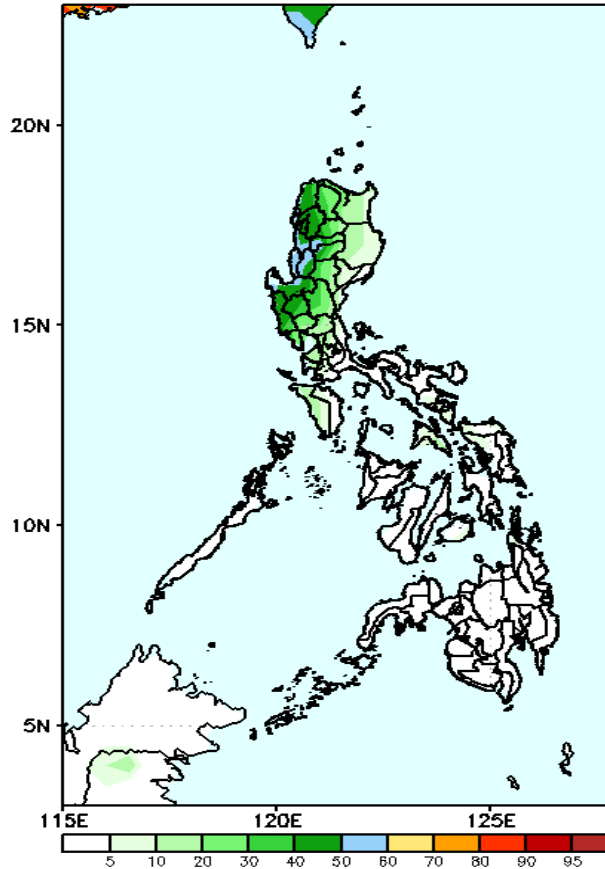
GEFS Week-1 Exceedance Prob. > 100mm  
Valid: 20240726 - 20240801



### Probability to Exceed 100mm

- Moderate to high over Ilocos Region, western CAR, most of Central Luzon,
- Low to moderate over the rest of Luzon;
- Low over the rest of the country.

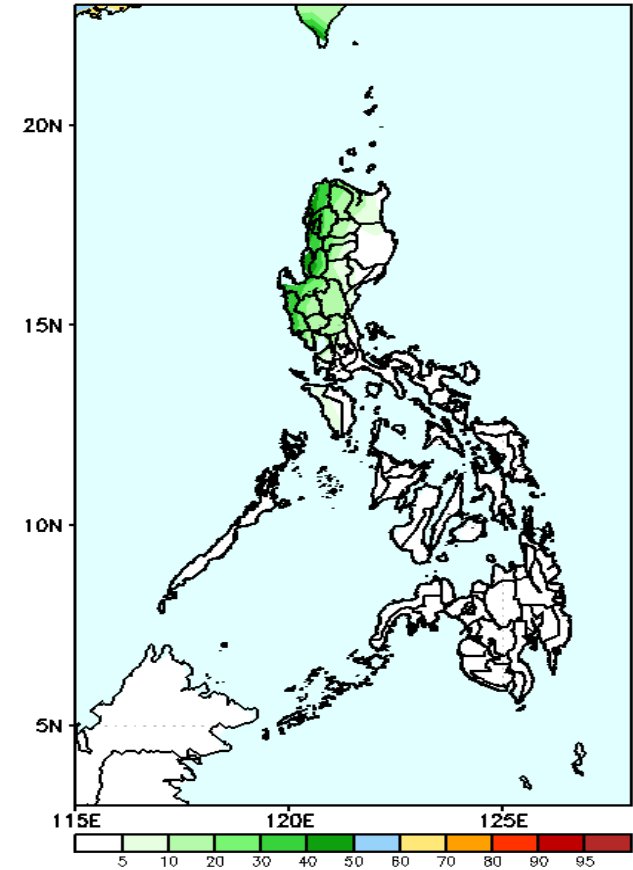
GEFS Week-1 Exceedance Prob. > 150mm  
Valid: 20240726 - 20240801



### Probability to Exceed 150mm

- Low to moderate over Northern and Central Luzon;
- Low over the rest of the country.

GEFS Week-1 Exceedance Prob. > 200mm  
Valid: 20240726 - 20240801



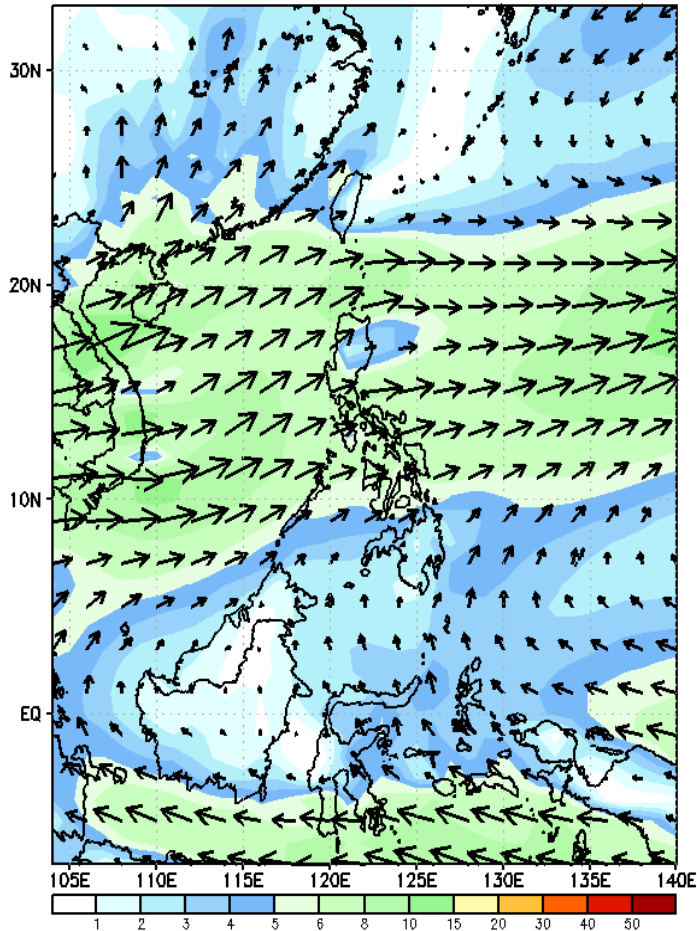
### Probability to Exceed 200mm

- Low to moderate over the western sections of Northern and Central Luzon;
- Low over the rest of the country.

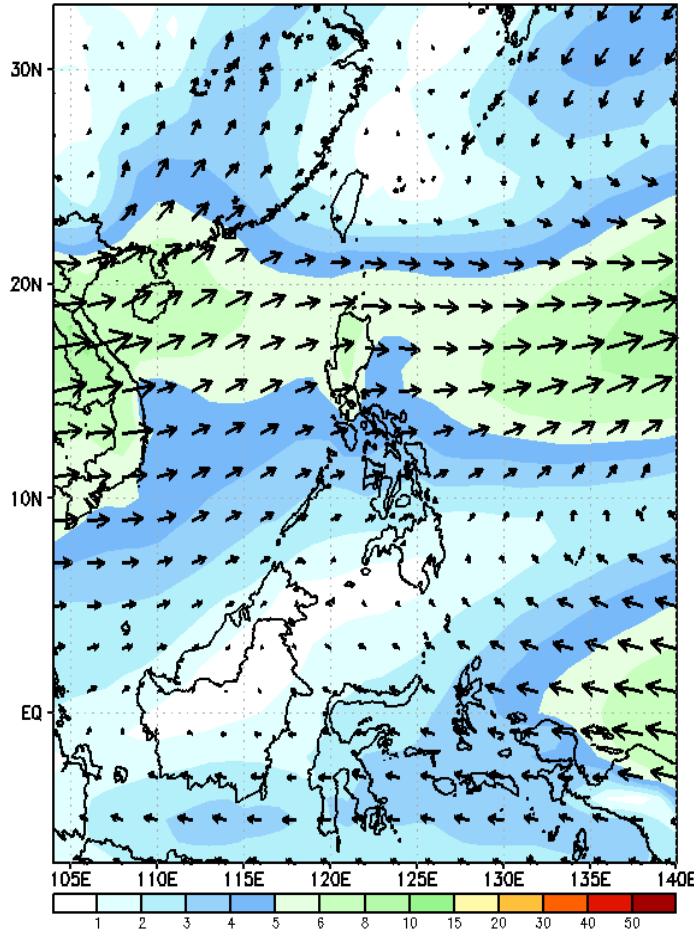
# GEFS Week-2 Wind Forecasts:

Week 2: Aug 02-08, 2024

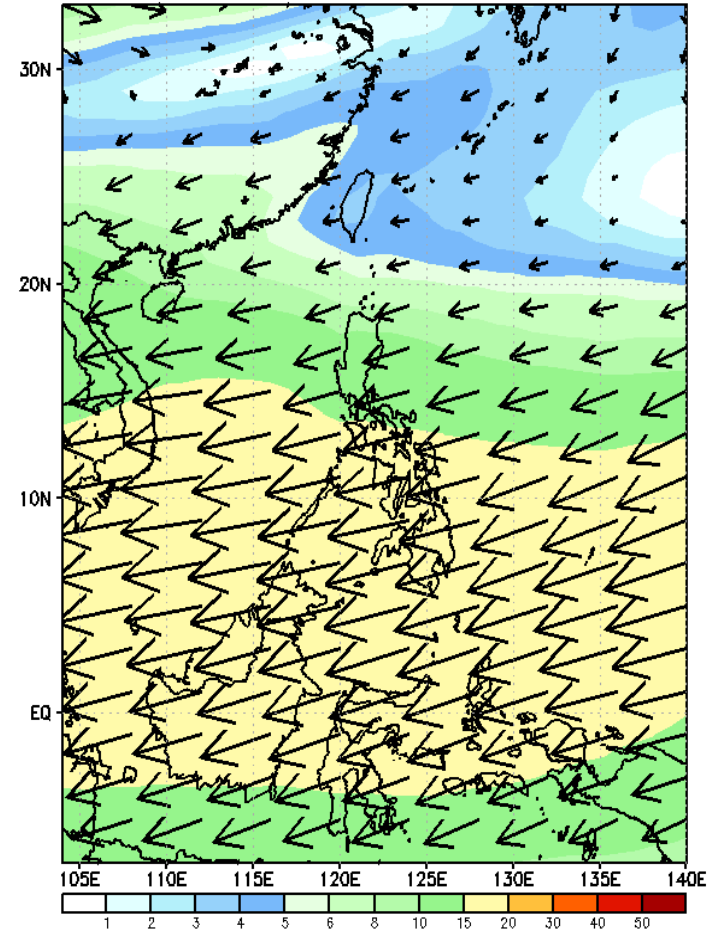
GEFS Week-2 850-hPa Wind Total  
Valid: 20240802 - 20240808



GEFS Week-2 700-hPa Wind Total  
Valid: 20240802 - 20240808



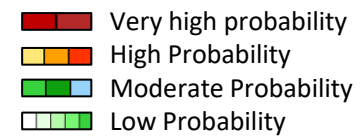
GEFS Week-2 200-hPa Wind Total  
Valid: 20240802 - 20240808



Southwest Monsoon affecting western sections of Luzon and Visayas. Easterlies affecting the rest of the country during the forecast period

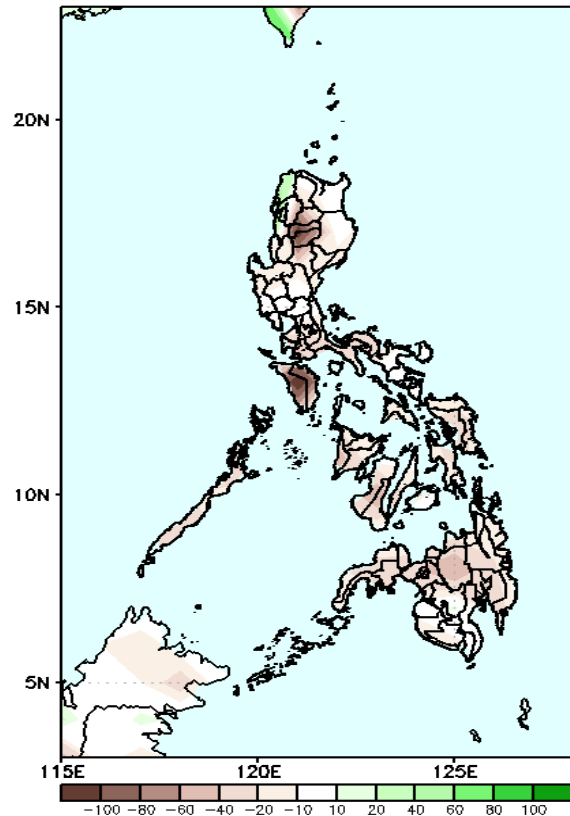


# Precipitation Anomaly and Exceedance Probability > 25/50 mm



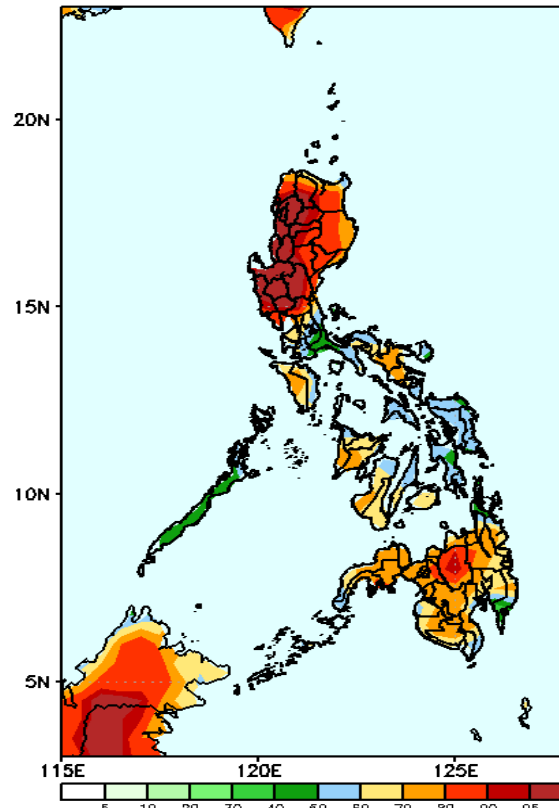
Week 2: Aug 02-08, 2024

GEFS Week-2 Precip Anomaly  
Valid: 20240802 - 20240808



20-80mm deficit of rainfall in most parts of the country is expected.

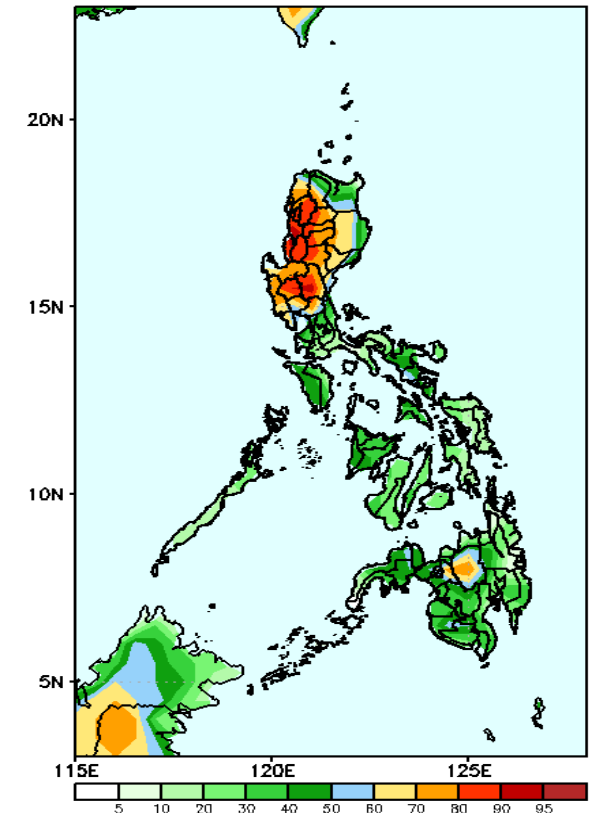
GEFS Week-2 Exceedance Prob. > 25mm  
Valid: 20240802 - 20240808



### Probability to Exceed 25mm

- High to very high over Northern and Central Luzon and Bukidnon;
- Moderate to high over the rest Luzon, Western Visayas, Negros Is. and most parts of Mindanao;
- Low to moderate over Palawan and the rest of Visayas.

GEFS Week-2 Exceedance Prob. > 50mm  
Valid: 20240802 - 20240808



### Probability to Exceed 50mm

- Moderate to high over most of Luzon, Panay and most of Mindanao;
- Low to moderate over the rest of the country.

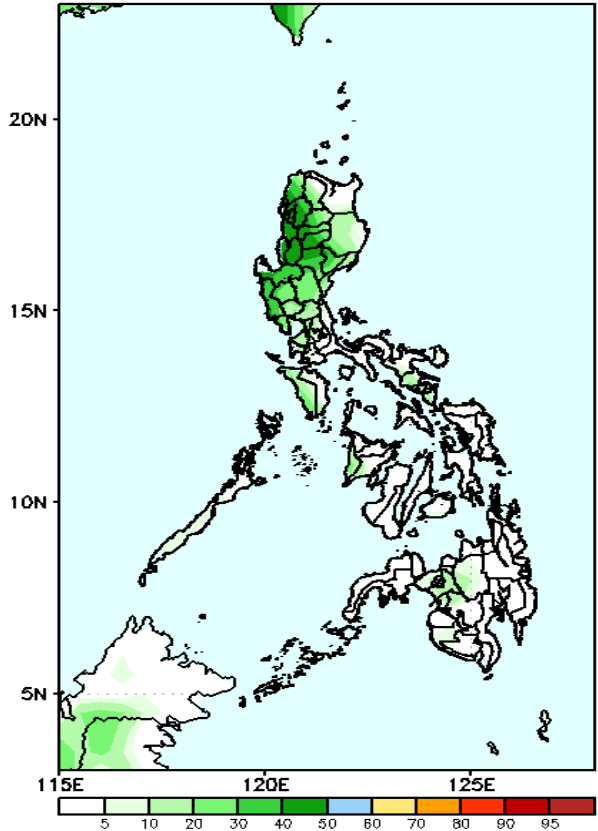


# Exceedance Probability > 100/150/200 mm

- Very high probability
- High Probability
- Moderate Probability
- Low Probability

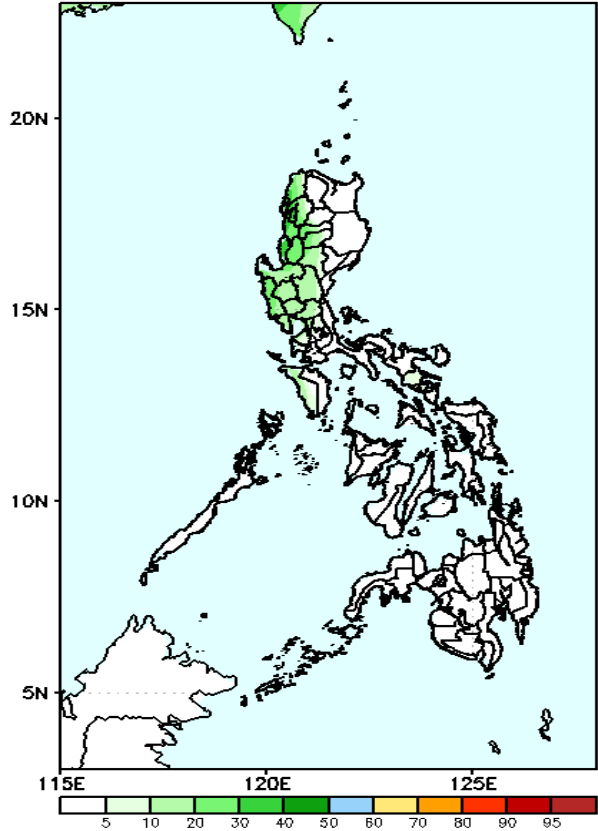
## Week 2: Aug 02-08, 2024

GEFS Week-2 Exceedance Prob. > 100mm  
Valid: 20240802 - 20240808



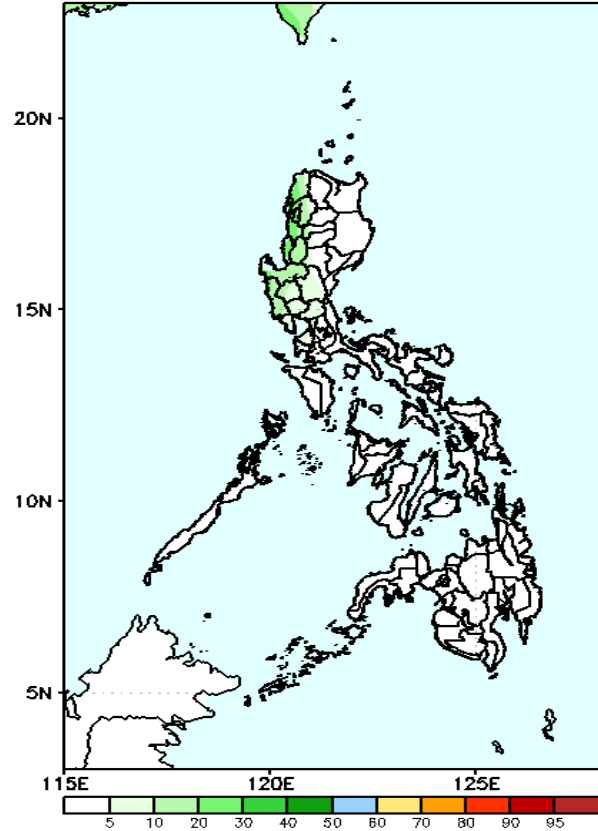
- Probability to Exceed 100mm**
- Low to moderate over Northern and Central Luzon;
  - Low over the rest of the country.

GEFS Week-2 Exceedance Prob. > 150mm  
Valid: 20240802 - 20240808



- Probability to Exceed 150mm**
- Low probability across the country.

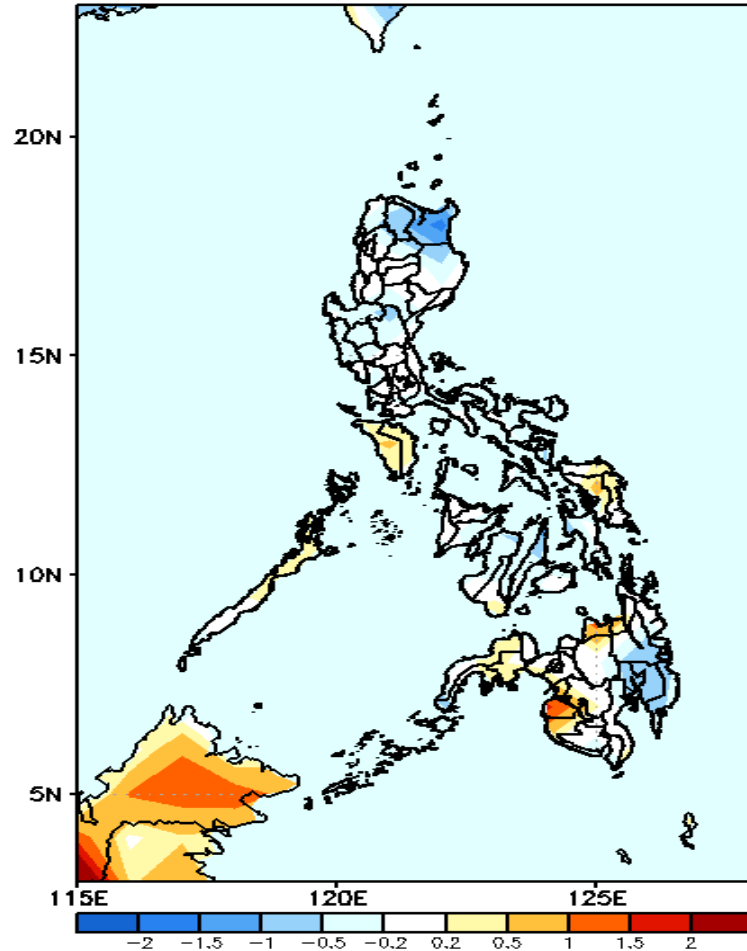
GEFS Week-2 Exceedance Prob. > 200mm  
Valid: 20240802 - 20240808



- Probability to Exceed 200mm**
- Low probability across the country.

# GEFS Week-1 & 2 Forecasts: T2m Anomaly

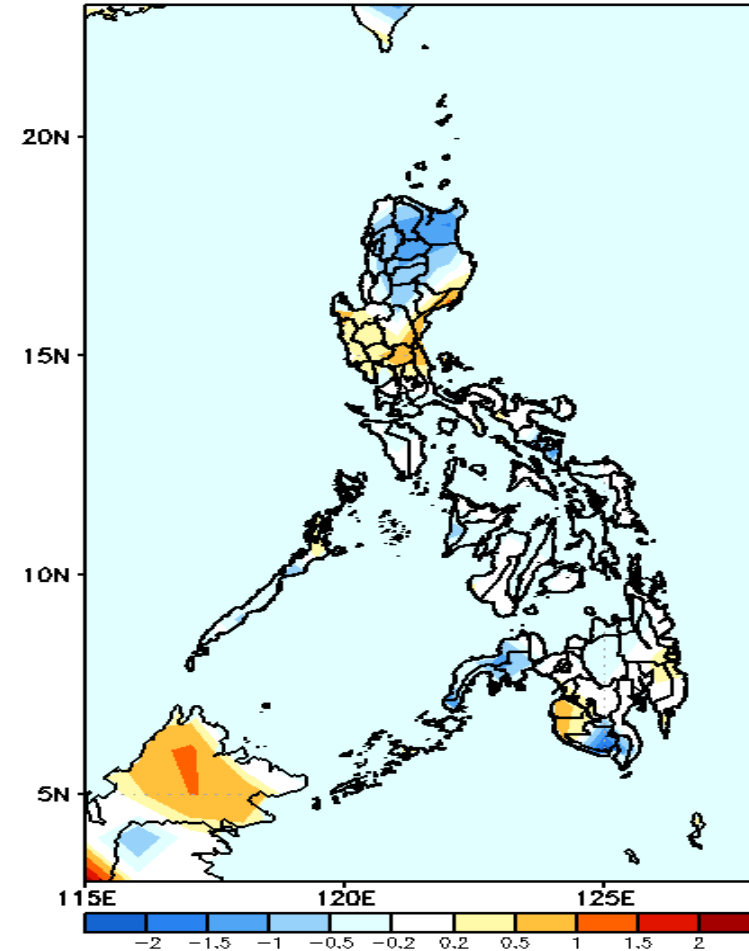
GEFS Week-1 T2m Anomaly  
Valid: 20240726 - 20240801



## 2m Temperature Week 1: Jul 26-Aug 01, 2024

Near to warmer surface air temperature will likely be experienced in most parts of the country except in Apayao, Cagayan, and Davao Region where slightly cooler to cooler than average surface air temperature is expected.

GEFS Week-2 T2m Anomaly  
Valid: 20240802 - 20240808



## 2m Temperature Week 2: Aug 02-08, 2024

Near to slightly warmer surface air temperature will likely be experienced in most parts of the country except in northern Luzon, Zamboanga Peninsula, South Cotabato, and Sarangani where slightly cooler to cooler than average surface air temperature is expected.